



EYE Cera Arc[®] 2800K Ceramic Metal Halide Lamp 2800K

New Generation of EYE CERA ARC Warm Color 2800K

ECG Only
Not Dimmable



150W
Clear

150W
Frosted

- Warmest ceramic m/h color temp. (2800K)
- High CRI (Ra95)
- Vivid red rendition (R9=60)
- Lumens 1.7 times greater than high color rendering white sodium

Features

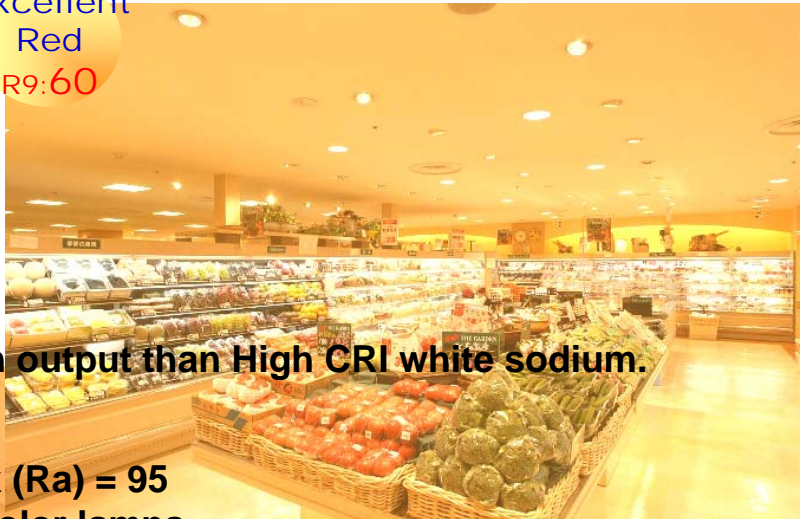
High Efficacy
90lm/W

High CRI
Ra:95

Excellent Red
R9:60

Slim Bulb
φ30

UV Cut



- 1.7 times higher lumen output than High CRI white sodium. (Compared with EYE SDX)

- Color Rendering Index (Ra) = 95
Highest CRI in warm color lamps

- Red rendering (R9) = 60
Excellent rendition of red color

- Slim bulb size, Φ30mm



CERA ARC 150W 2800K Characteristics

Watts	Color	Type	Description	Packing Q'ty	VL (V)	IL (A)	Lumens (lm)	CCT (K)	CRI (Ra)	Rated Av. Life (hrs)	LPW (lm/W)	Dimension (mm)			Base	Burn Pos.
												MOL	Dia.	LCL		
150W	Warm color	Clear	MT150CE-LW/S	12	90	1.67	13,500	2800	95	9,000	90	140	30	95	E26/7	Universal
		Frosted	MT150FCE-LW/S	12	90	1.67	13,000	2800	95	9,000	87	140	30	-	E26/7	Universal

